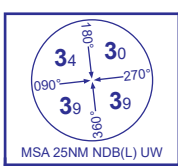
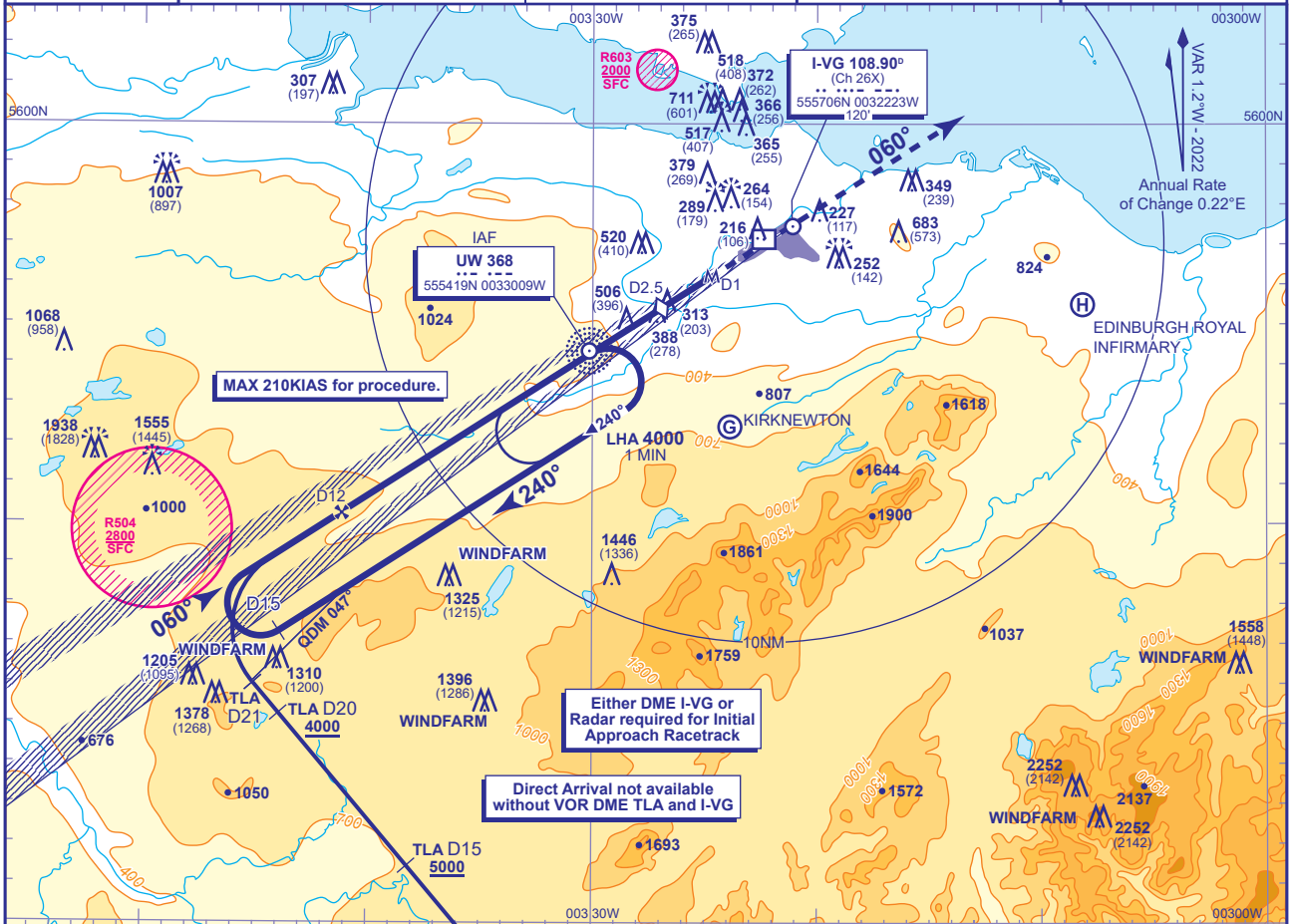


INSTRUMENT APPROACH CHART - ICAO

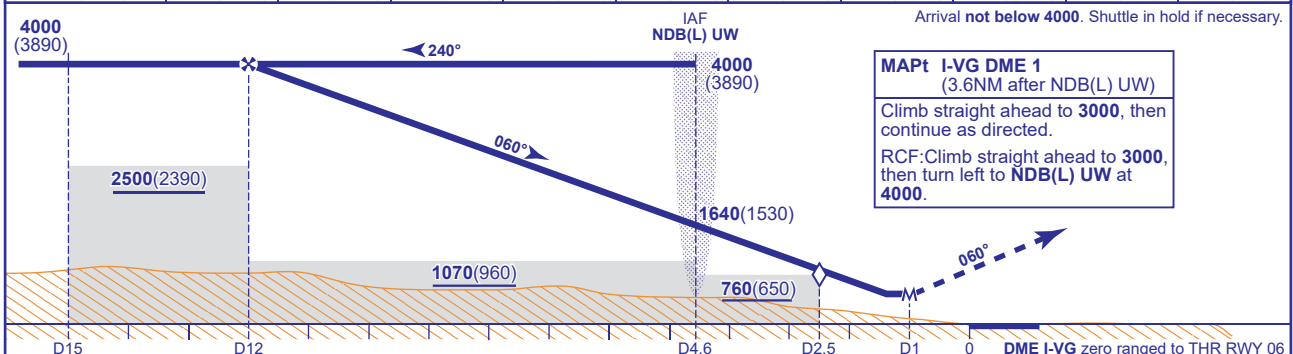
EDINBURGH
LOC/DME/NDB(L)
RWY 06
(ACFT CAT A,B,C,D)

APP	121.205	EDINBURGH APPROACH	AD ELEVATION	136
TWR	118.705	EDINBURGH TOWER	THR ELEVATION	110
	121.755	EDINBURGH GROUND	OBSTACLE ELEVATION	2252 AMSL (2142) (ABOVE THR)
RAD	121.205, 128.980	EDINBURGH RADAR		
ATIS	131.355	EDINBURGH INFORMATION	BEARINGS ARE MAGNETIC	

TRANSITION ALTITUDE
6000

RECOMMENDED PROFILE Gradient 5.2%, 320FT/NM

DME I-VG	10	9	8	7	6	5	4	3	2.5 (SDF)	2
ALT(HGT)	3350(3240)	3030(2920)	2710(2600)	2390(2280)	2070(1960)	1760(1650)	1440(1330)	1120(1010)	960(850)	800(690)



Aircraft Category	A	B	C	D	Rate of descent	G/S KT	160	140	120	100	80
OCA (OCH)	WITH DME	590(480)	590(480)	590(480)	590(480)	FT/MIN	850	740	640	530	420
	NO DME	760(650)	760(650)	760(650)	760(650)	MIN:SEC	1:21	1:32	1:48	2:10	2:42
VM(C)OCA (OCH AAL)	Total Area	780(644)	980(844)	1470(1334)	2020(1884)						
	North of RWY 06/24	680(544)	820(684)	920(784)	1120(984)						

DIRECT ARRIVAL VIA VOR DME TLA VOR DME (IAF) as cleared, fly outbound on VOR TLA R321 descending **not below 6000**. From TLA VOR R321 DME 11 continue descent to cross TLA DME 15 **not below 5000** and TLA DME 20 **not below 4000**. At TLA DME 21 (NDB(L) UW QDM 047°) turn right to intercept the LOC and continue as for main procedure.

AIRCRAFT UNABLE TO RECEIVE DME Radar ranges will be provided at the equivalent of D15 outbound on the racetrack and D12 inbound. Turn right to intercept the LOC. When established, descend at equivalent of D12 inbound to **not below 1070(960)** until overhead NDB(L) UW, then continue descent to MDH.

NOTE See AD2.22 / 1.d and 4.a for speed restrictions.

CHANGE (4/25): KIRKNEWTON GLIDER SITE ADDED.